

## RX

0.3 to 8N.m

The RX DC motors, combined with RTS drives, provide an economical solution for any servo mechanism applications.

They are particularly suitable for low power systems in clean atmospheres.



### RX characteristics

| Motor  | Torque at low speed $M_0$ (N.m) | Permanent current at low speed $I_0$ (A) | Rated voltage U (V) | Rated speed N (rpm) | Rotor inertia J ( $\text{kgm}^2 \cdot 10^{-3}$ ) |
|--------|---------------------------------|--|---------------------|---------------------|--|
| RX120L | 0.285                           | 2.8                                      | 44.5                | 3000                | 5  |
| RX130H | 0.4                             | 3.6                                      | 46                  | 3000                | 6.8  |
| RX320E | 1.08                            | 7.8                                      | 54                  | 3000                | 50   |
| RX330C | 1.54                            | 9.4                                      | 59                  | 2900                | 72   |
| RX520K | 2.7                             | 7.7                                      | 119                 | 2800                | 128  |
| RX530F | 3.7                             | 10.3                                     | 116                 | 2700                | 174  |
| RX620J | 5                               | 10.5                                     | 134                 | 2400                | 350  |
| RX630E | 7.8                             | 16                                       | 134                 | 2400                | 500  |

| Associated motor | Tachy Type | EMF (V/1000 rpm) | Brake (24Vdc $\pm$ 10%) |          | Inertia ( $\text{kgm}^2 \cdot 10^{-3}$ ) | Weight (kg) |
|------------------|------------|------------------|-------------------------|----------|--|-------------|
|                  |            |                  | Holding torque (N.m)    |          |  |             |
|                  |            | at 20°C          |                         | at 100°C |  |             |
| RX1              | TBN 206    | 6                | 1                       | 0.9      | 1  | 0.4         |
| RX3              | TBN 206    | 6                | 1.5                     | 1.4      | 1  | 0.18        |
| RX5              | TBN 306    | 6                | 6                       | 5.5      | 5.3                                      | 0.45        |
| RX6              | TBN 306    | 6                | 12                      | 11.5     | 15.7                                     | 0.9         |

### Encoder

| Type | Associated motor | Pulses per rev. |           | Inertia ( $\text{kgm}^2 \cdot 10^{-3}$ ) | Weight (kg) |
|------|------------------|-----------------|-----------|--|-------------|
|      |                  | standard        | option    |  |             |
| K10  | RX1 / RX3        | 500             | 250       | 0.03                                     | 0.07        |
| C4   | RX1 / RX3        | 500             | 1000-2000 | 0.23                                     | 0.2         |
| C6B  | RX5 / RX6        | 500-1000        | 2500-5000 | 0.3                                      | 0.45        |

EXCELLENT PRICE/PERFORMANCE RATIO

VERY LOW TORQUE MODULATION

FERRITE MAGNETS

CONSTRUCTION QUALITY

VERY LONG LIFETIME

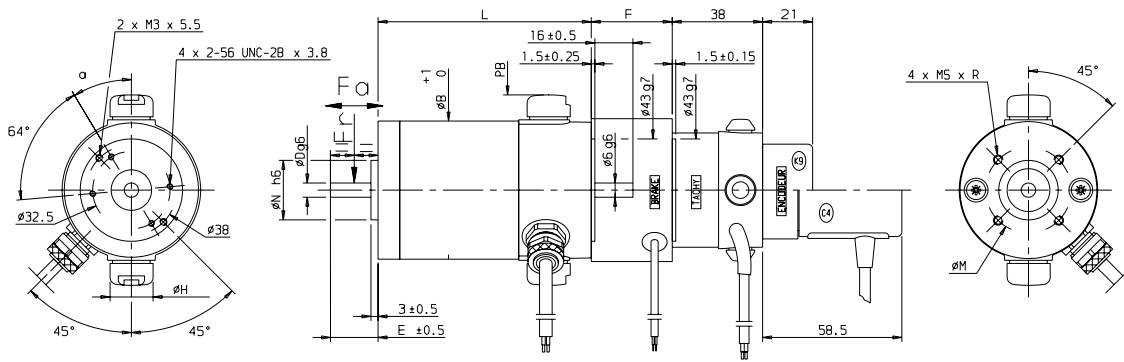
TACHY, ENCODER, RESOLVER OPTION

BRAKE OPTION

PROTECTION IP40 (RX1 AND RX3)  
IP54 (RX5 AND RX6), IP55 OPTION

CLASS F INSULATION

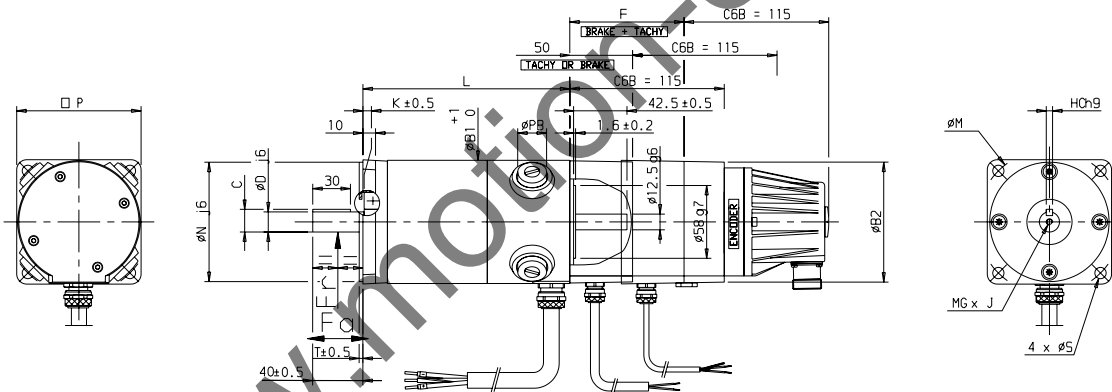
# DC SERVO MOTORS



## RX1 and RX3 with brake, tachy and encoder dimensions

| Motor | H    | α   | N  | D  | E  | B  | PB  | L     | F  | MSxR  | M  | Weight | Fr*<br>(daN) | Fa*<br>(daN) |
|-------|------|-----|----|----|----|----|-----|-------|----|-------|----|--------|--------------|--------------|
| RX120 | 18.5 | 31° | 25 | 6  | 20 | 58 | 80  | 122.5 | 34 | M4x6  | 36 | 1.35   | 18           | 16           |
| RX130 | 18.5 | 31° | 25 | 6  | 20 | 58 | 80  | 147.5 | 34 | M4x6  | 36 | 1.6    | 20           | 16           |
| RX320 | 23   | 26° | 50 | 11 | 32 | 84 | 100 | 178.5 | 40 | M5x10 | 65 | 4      | 45           | 23           |
| RX330 | 23   | 26° | 50 | 11 | 32 | 84 | 100 | 218.5 | 40 | M5x10 | 65 | 5.2    | 50           | 23           |

\*Fr and Fa not cumulative  
Dimensions in mm  
Weight in kg



## RX5 and RX6 with brake, tachy and encoder dimensions

| Motor | P   | N   | C    | D  | T   | K   | B1  | PB | L   | F  | B2  | S  | M   | MGxJ  | HC | Weight | Fr*<br>(daN) | Fa*<br>(daN) |
|-------|-----|-----|------|----|-----|-----|-----|----|-----|----|-----|----|-----|-------|----|--------|--------------|--------------|
| RX520 | 100 | 95  | 18   | 16 | 3   | 1   | 98  | 25 | 216 | 91 | 96  | 9  | 115 | M5x15 | 5  | 6.6    | 80           | 30           |
| RX530 | 100 | 95  | 18   | 16 | 3   | 1   | 98  | 25 | 266 | 91 | 96  | 9  | 115 | M5x15 | 5  | 8.7    | 85           | 30           |
| RX620 | 120 | 110 | 21.5 | 19 | 3.5 | 0.5 | 116 | 30 | 272 | 93 | 117 | 10 | 130 | M6x18 | 6  | 13     | 95           | 40           |
| RX630 | 120 | 110 | 21.5 | 19 | 3.5 | 0.5 | 116 | 30 | 358 | 93 | 117 | 10 | 130 | M6x18 | 6  | 18.5   | 100          | 40           |

\*Fr and Fa not cumulative  
Dimensions in mm  
Weight in kg